



# eMudhra emBridge Windows Installation Guide



## **Copyright**

Copyright © eMudhra Limited. All rights reserved. The information in this document is intended for the use of eMudhra customers only for the purposes of the agreement under which the document is submitted, and no part of it may be reproduced or transmitted in any form or means without the prior written permission of eMudhra. The document has been prepared to be used by professional and properly trained personnel, and the customer assumes full responsibility when using it.

This document and the product it describes are considered protected by copyright according to the applicable laws.

## **Disclaimer**

The information or statements given in this document concerning the suitability, capacity, or performance of the mentioned hardware or software products cannot be considered binding but shall be defined in the agreement made between eMudhra and the customer. However, eMudhra has made all reasonable efforts to ensure that the instructions contained in the document are adequate and free of material errors and omissions. eMudhra will, if necessary, explain issues, which may not be covered by the document.

## **Feedback**

eMudhra welcomes customer comments as a part of the process of continuous development and improvement of the documentation.

## **Trademarks and Registered Trademarks**

Products and product names mentioned in this document may be trademarks or registered trademarks of their individual proprietors.

## **Published by**

eMudhra

[www.emudhra.com](http://www.emudhra.com) | [info@emudhra.com](mailto:info@emudhra.com)



## Table of Contents

---

1. Overview .....	<b>Error! Bookmark not defined.</b>
2. Installation prerequisites .....	<b>Error! Bookmark not defined.</b>
3. Installation Procedure .....	3
4. Testing the Installation .....	7

# 1. Overview

---

emBridge is a client tool for certificate management being used in most of the popular desktop operating systems. It exposes several REST API's to use certificates from a client system to various browsers/client application integrations.

This document provides a high-level overview of the steps involved in installing emBridge for Windows operating system.





## 2. Installation Prerequisites

---

This document intends that the following prerequisites are available:

- emBridge installed in local client system and running.
- Below Table 1 gives list of supporting Windows OS and its versions.

OS	Version
Windows Client	7 SP2+, 8.1
Windows 10 Client	Version 1607+
Windows Server	2008 R2 SP1+

**Table 1**



### 3. Installation Procedure

---

Here is a step by step guide on how to install emBridge.

**Step 1:** Download the emBridge.exe from <https://embridge.emudhra.com/>

Install emBridge with admin rights.

Click on emBridge.exe file and follow the below mentioned steps.

**Step 2:** Click on “**Check box**” to add desktop shortcut and click “**Next**” button as shown in Figure 1.

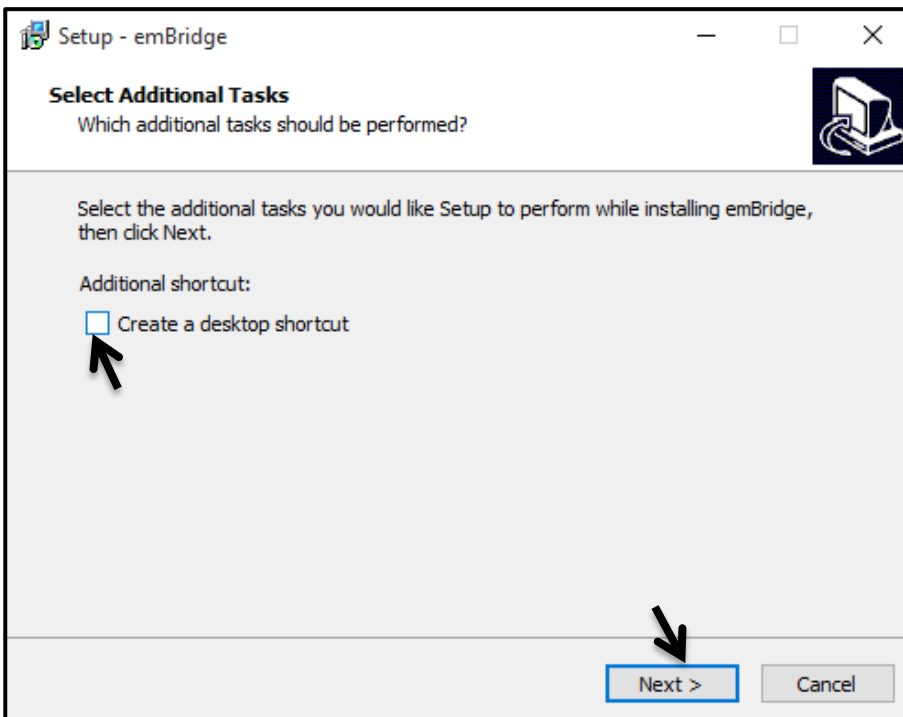


Figure 1



**Step 3:** Click on “Install” button as shown in Figure 2.

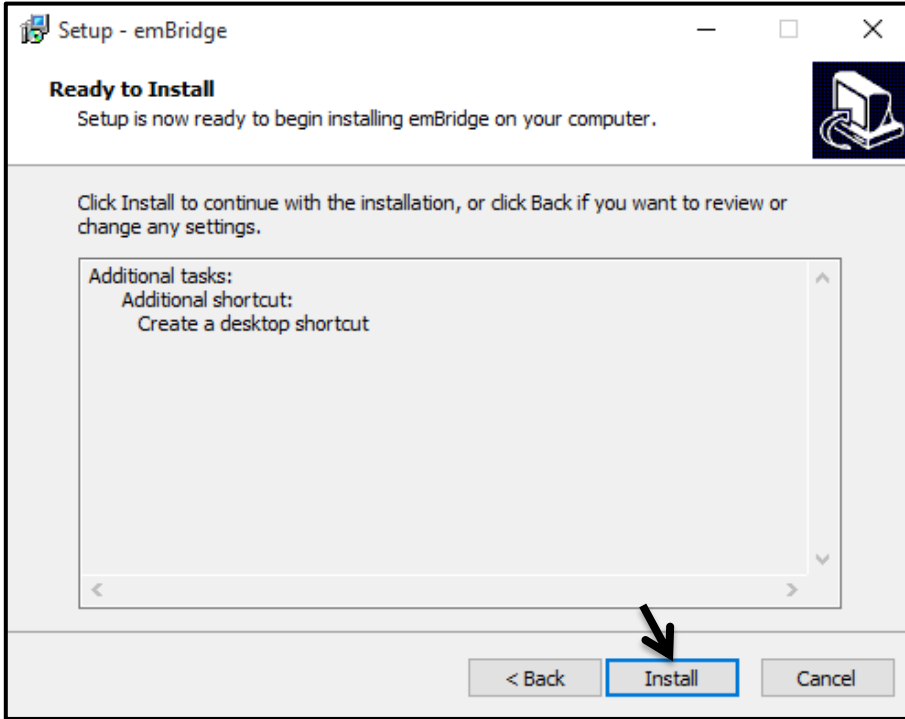


Figure 2

**Step 4:** On click of “Next” button as shown in Figure 3 installer stops running emBridge service and uninstall previous installations if any and auto install updated version.

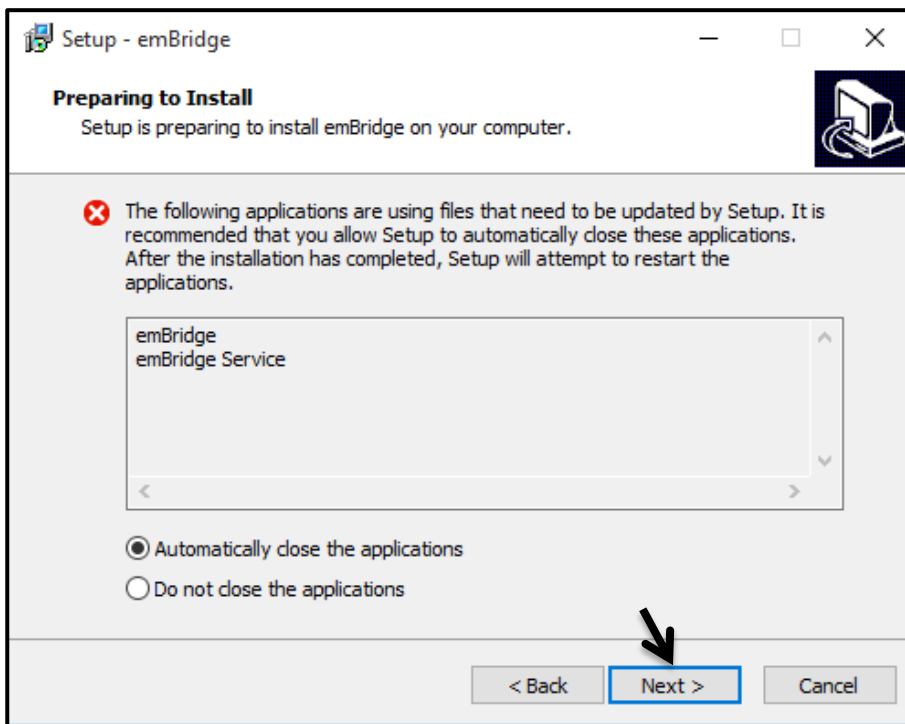


Figure 3



**Step 5:** emBridge is successfully installed in your PC click “**Finish**” button to complete the installation as shown in Figure 4.

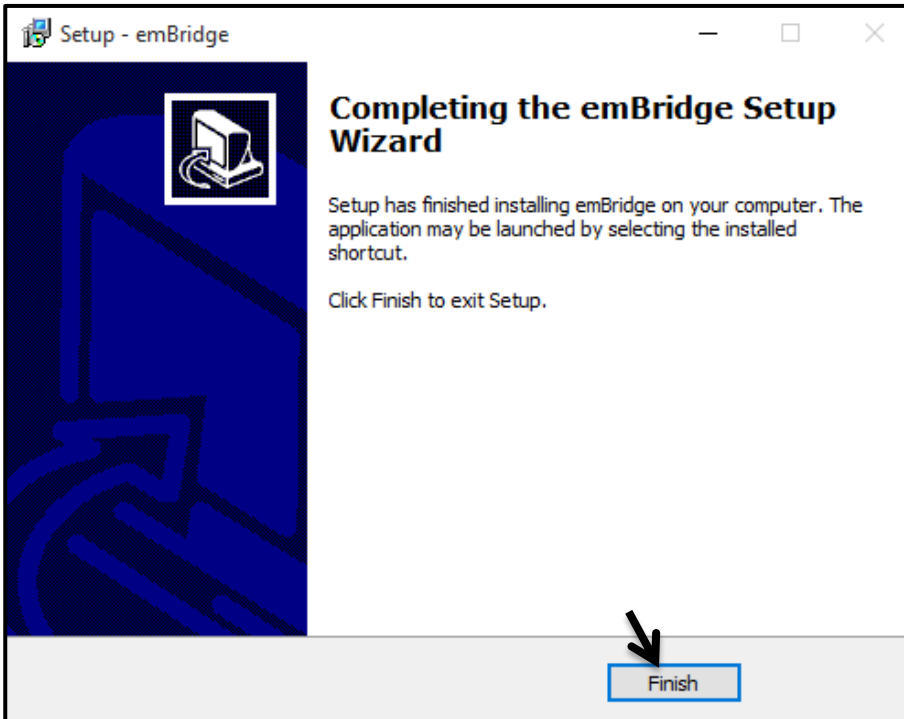


Figure 4

**Step 6:** Launch the application “emBridge” by clicking on the icon as shown in the Figure 5, to check running status.

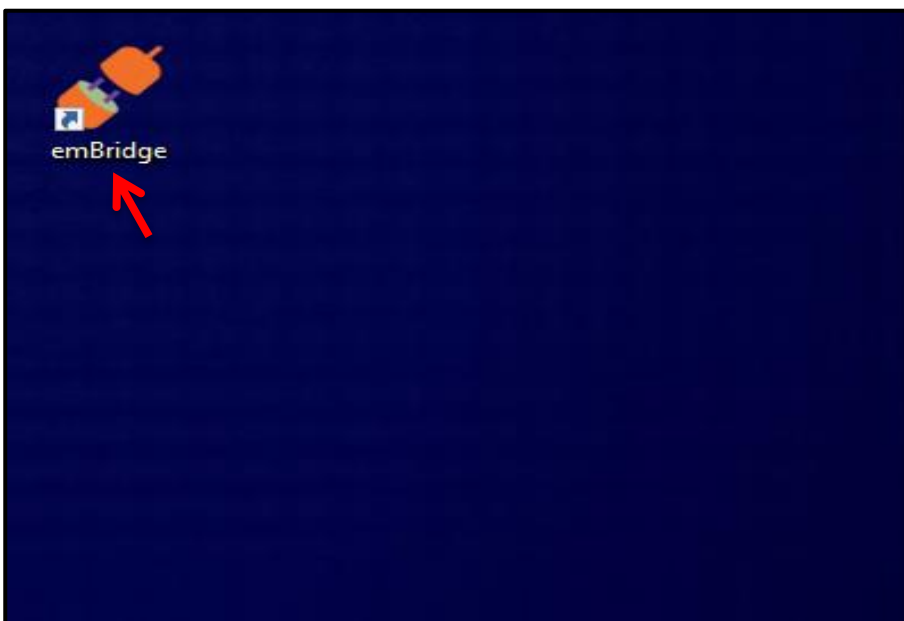


Figure 5





**Step 7:** Click on “Refresh” button to restart the emBridge as shown in Figure 6.

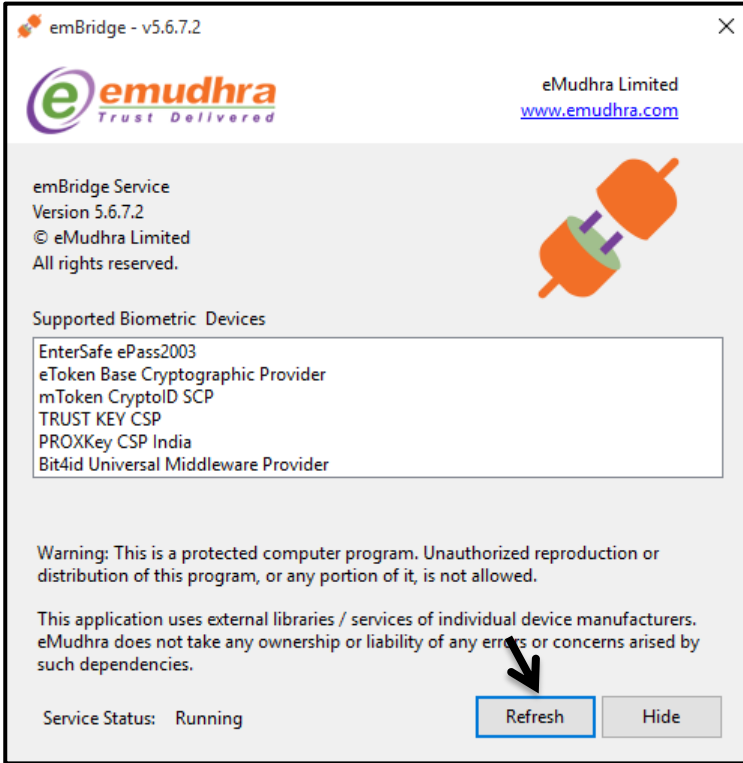


Figure 6



## 4. Testing the Installation

After successful installation of the software, can test the installation as mentioned below:

- I. Type URL: <https://localhost.emudhra.com:26769> in web browser, if the URL is able to resolve as shown in Figure 7 then the emBridge is running on the PC.

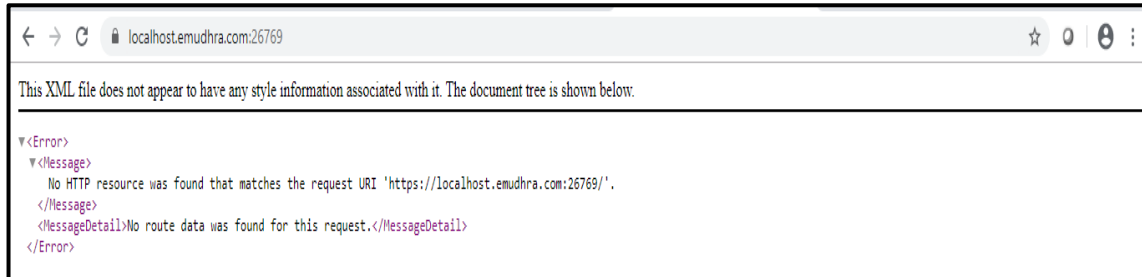


Figure 7

- II. If in case not able to list connected tokens/certificates, please follow below steps :

- Open “Run” app OR Use shortcut key “windows + R” Key.
- Type “cmd” in Run application.
- Type “services.msc” in Cmd and click on “OK” as shown in Figures 8.

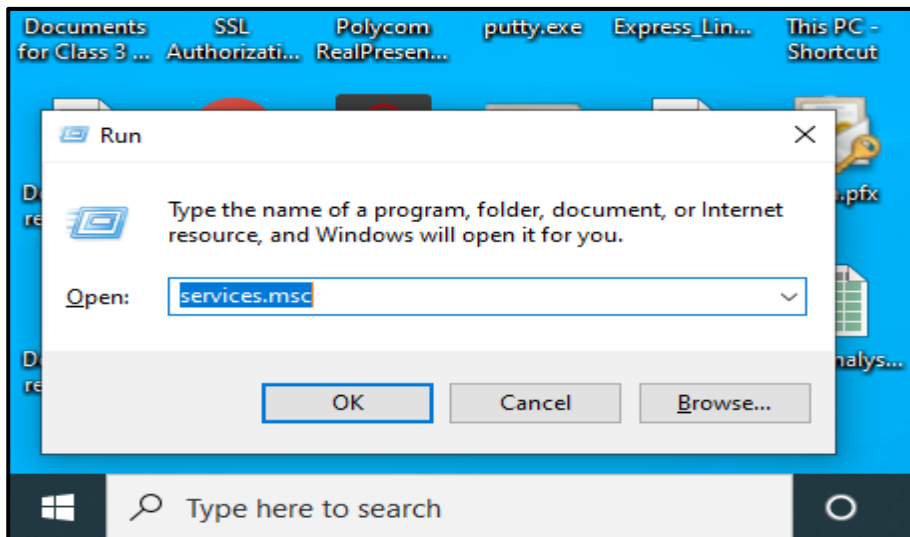


Figure 8



- In Services select “emBridge” and right click on “emBridge service” to stop the service as shown in Figure 9.

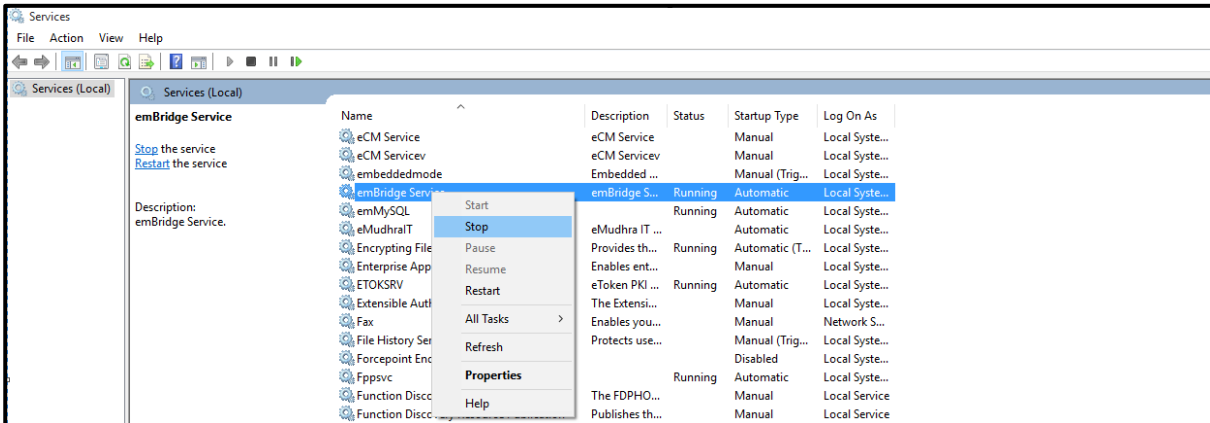


Figure 9

- Go to Path : C:\Windows\System32\drivers\etc and edit the file “hosts” and insert new line as provided below and save the file as shown in Figure 10 -11.

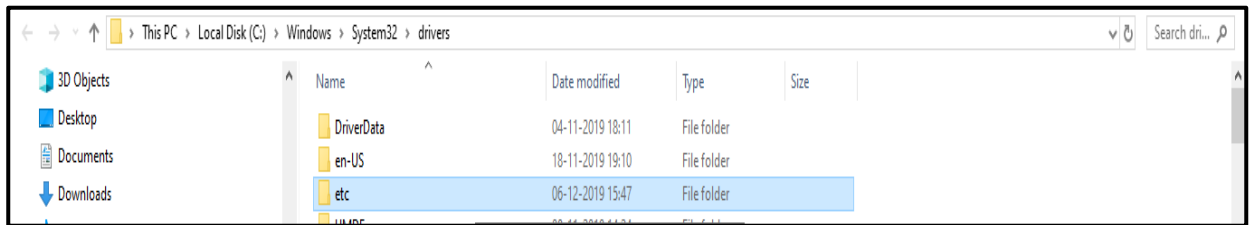


Figure 10

### 127.0.0.1 localhost.emudhra.com

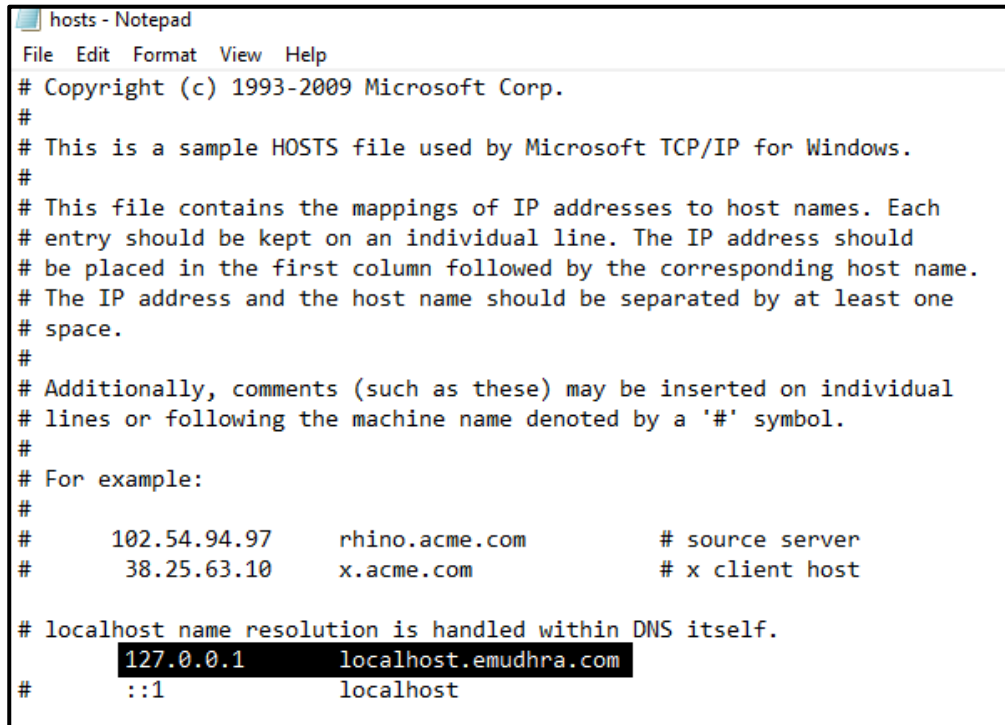


Figure 11



III. Start the emBridge service as shown in Figure 12.

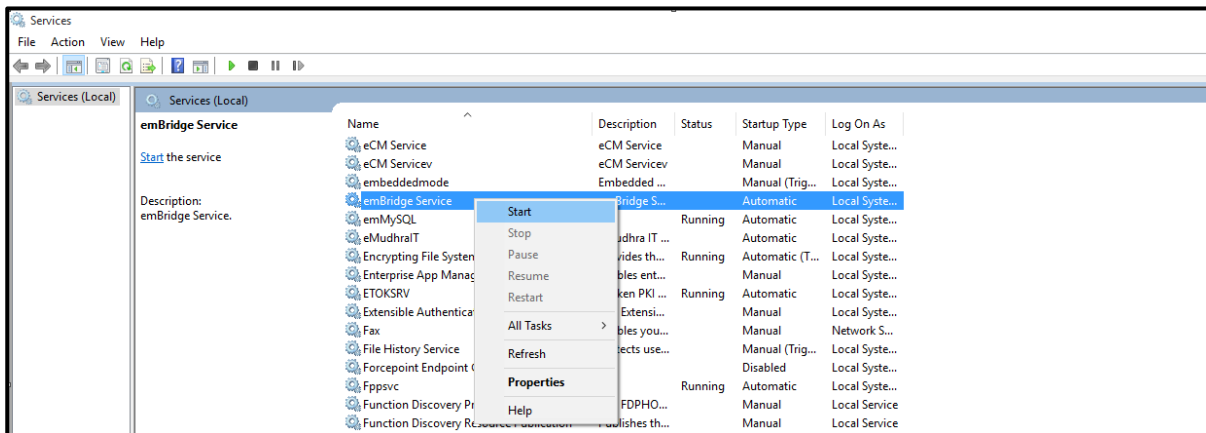


Figure 12